

Get involved and join our WOW Community

Share your experiences of the weather and join in the nation's favourite conversation

Watching the weather is a fun and educational activity. Join weather observers from around the world and upload your own observations to the Weather Observations Website (WOW). These observations can be ones you have recorded on an Automatic Weather Station (AWS) or just by looking out of the window or sending in a photo.

Weather observations and weather impact information is a valuable source of information for the Met Office. WOW allows you to view the weather forecast for the local area and compare your observations with others in the surrounding area and from the official Met Office observation network.

WOW can also be used to report the impacts the weather has on people's lives, see whether the roads in your area have been flooded or if there's a tree down on your way to work or school.

Reducing costs of home weather stations, together with improving data quality and the growing world of social networking now makes it relatively easy for you to get involved and record and share your weather observations.

DID YOU KNOW?

- Nearly a billion observations have been received by WOW in the last 5 years, over 13 million per month from volunteer observers just like you.
- WOW is capable of receiving observations from around the world; to date WOW has received observations from 218 countries (as recognised by Google).
- Over 10,000 WOW stations have been set up worldwide and many more people submit quick observations without the need for a weather station.

Running a weather observation site

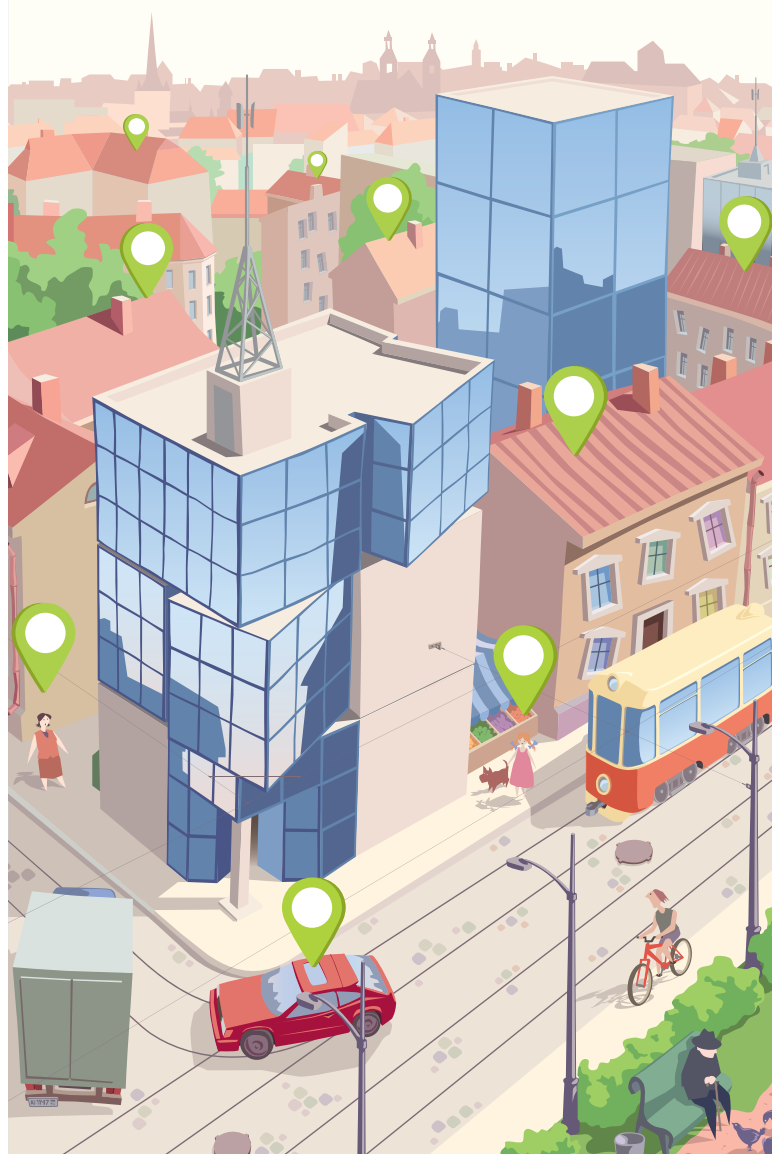
WOW can be used by anyone – from an individual just wanting to share the current weather status or a photo, to weather enthusiasts who make frequent observations e.g. a daily manual observation at 09:00 GMT, or more frequently via an AWS.

SIGNING-UP FOR WOW

Firstly, it's free. There are no charges for using WOW. All you need to do is complete a short sign-up form...

wow.metoffice.gov.uk

This will provide you with a login to WOW, which can also be used for other current and future online Met Office services. You will soon be able to use your social media account (Facebook, Google, Twitter) to login to WOW too. If you already have a login to an existing online service, you can add WOW to the list of Met Office services that account has access to within your account page.



Submitting observations

There are a number of ways that observations can be submitted which should satisfy all types of user, using a wide range of equipment, from a casual observer to a keen weather enthusiast.

MANUAL OBSERVATIONS

- From any location, without the need for any instrumentation or digital logging. If you are not logged in, these observations are stored as 'Quick Observations' and will not be stored against your user account; therefore you will not be able to view them in the "My Quick Observations" view.
- Against a registered Site (if you are logged in) the observations will be stored under "My Quick Observations" view.
- An associated photo can also be uploaded as part of an observation or on its own, for example, to provide evidence of weather impacts.

AUTOMATIC OBSERVATIONS

For users who own a compatible Automatic Weather Station (AWS).

File upload

Users can upload a file of data as long as it is in the correct format...

<http://wow.metoffice.gov.uk/support/dataformats#dataFileUpload>

...for WOW. This is useful if your AWS software is not yet able to send an Automatic observation or if you wish to submit a large amount of historic data.

WOW provides a simple API for you to automatically upload data into WOW. The easiest solution for most users is to use a piece of software that supports this API, some of these are listed here:

<http://wow.metoffice.gov.uk/support/dataformats#dataAWS>

Making an observation

