

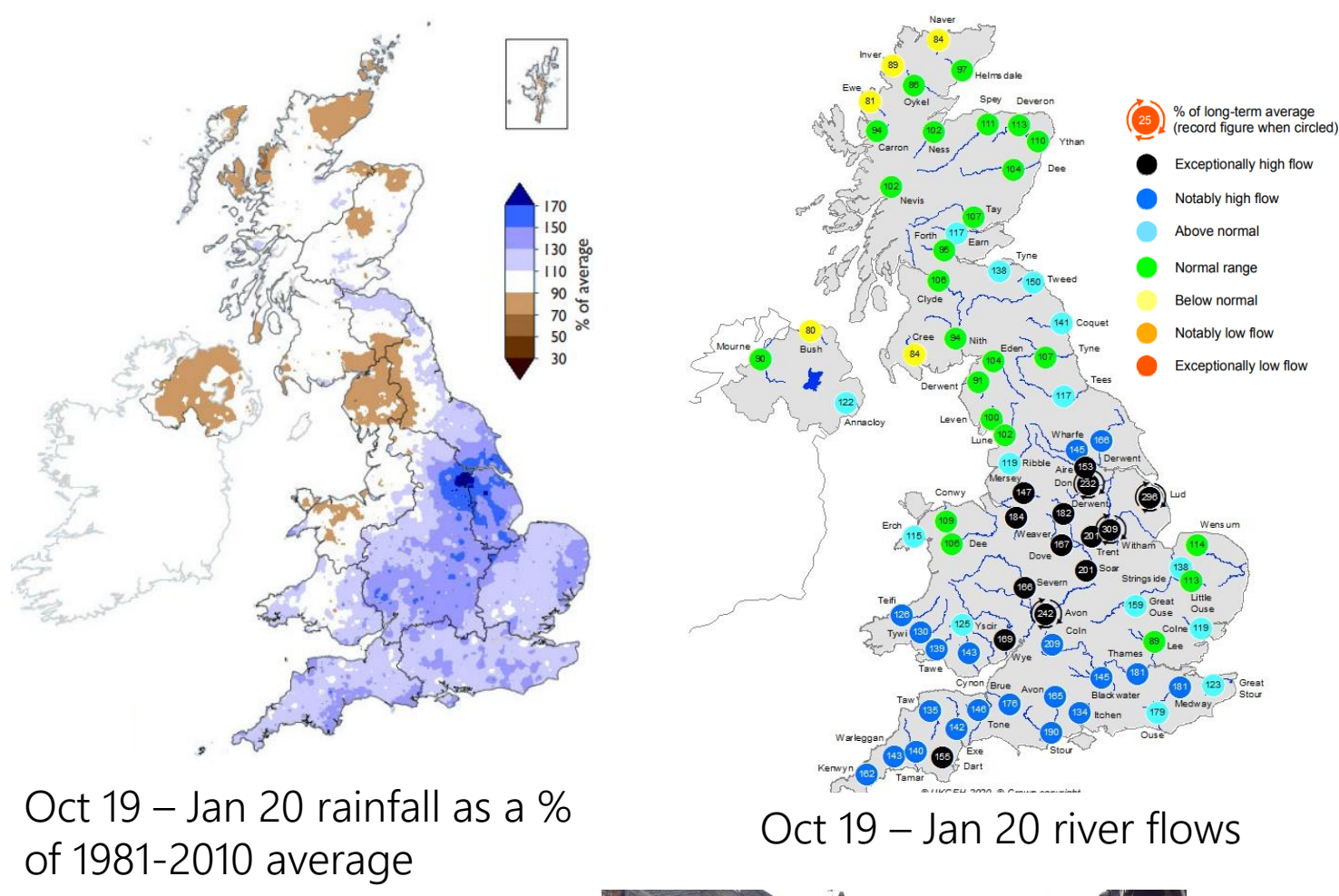


National Hydrological Monitoring Programme

- Independent, authoritative commentary on current hydrological conditions
Placement of current conditions in their long-term historical context - Hydrological Summary for the UK and briefing notes during extreme events
Reports on major floods and droughts and analysis of hydrological trends
Subscribe to receive the Hydrological Summary:



Hydrological Summary for the United Kingdom



Oct 19 - Jan 20 rainfall as a % of 1981-2010 average

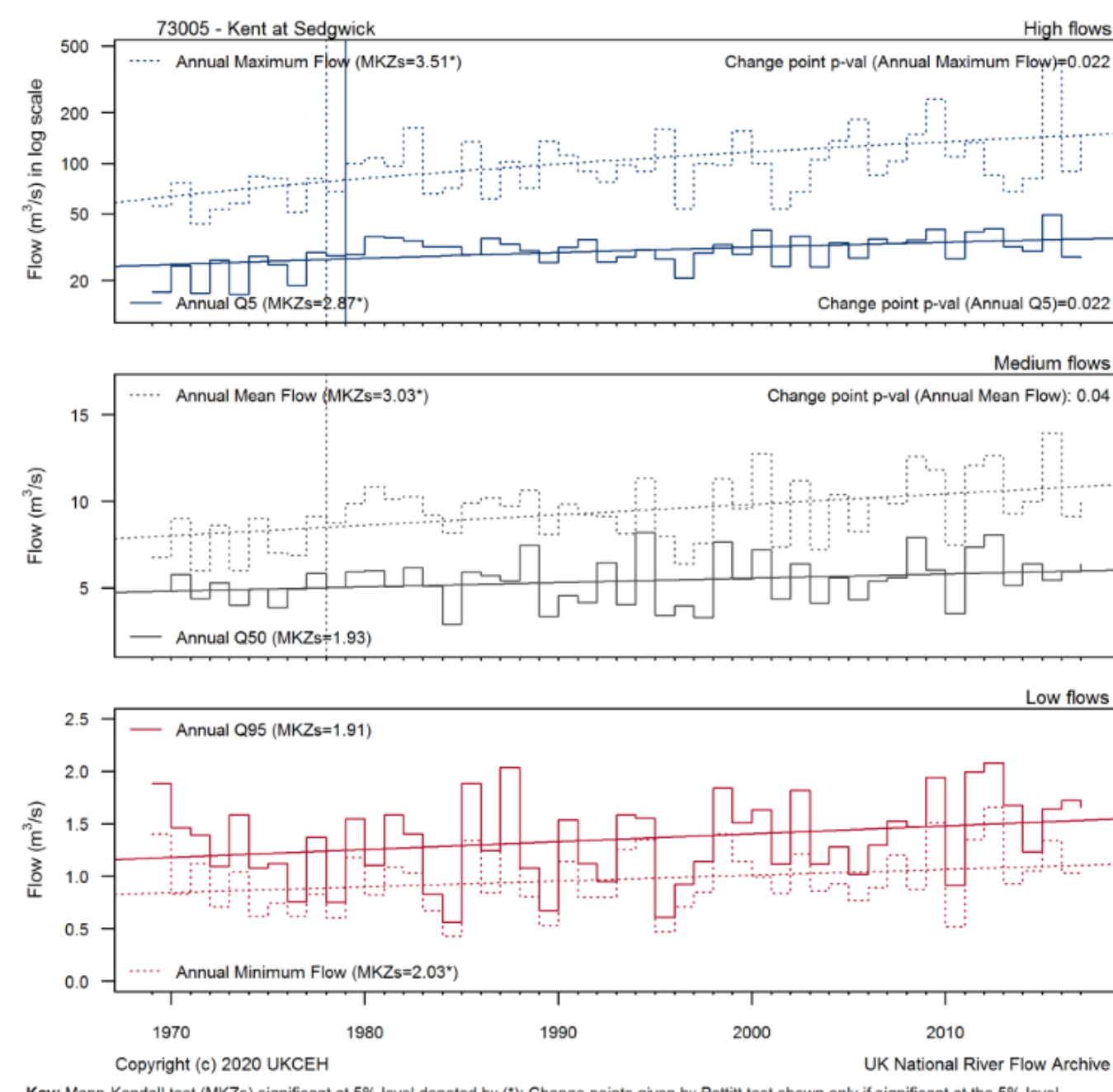
Oct 19 - Jan 20 river flows

Briefing Note: Severity of the November 2019 floods - preliminary analysis



The winter floods of 2013/2014 in the UK: hydrological responses and impacts

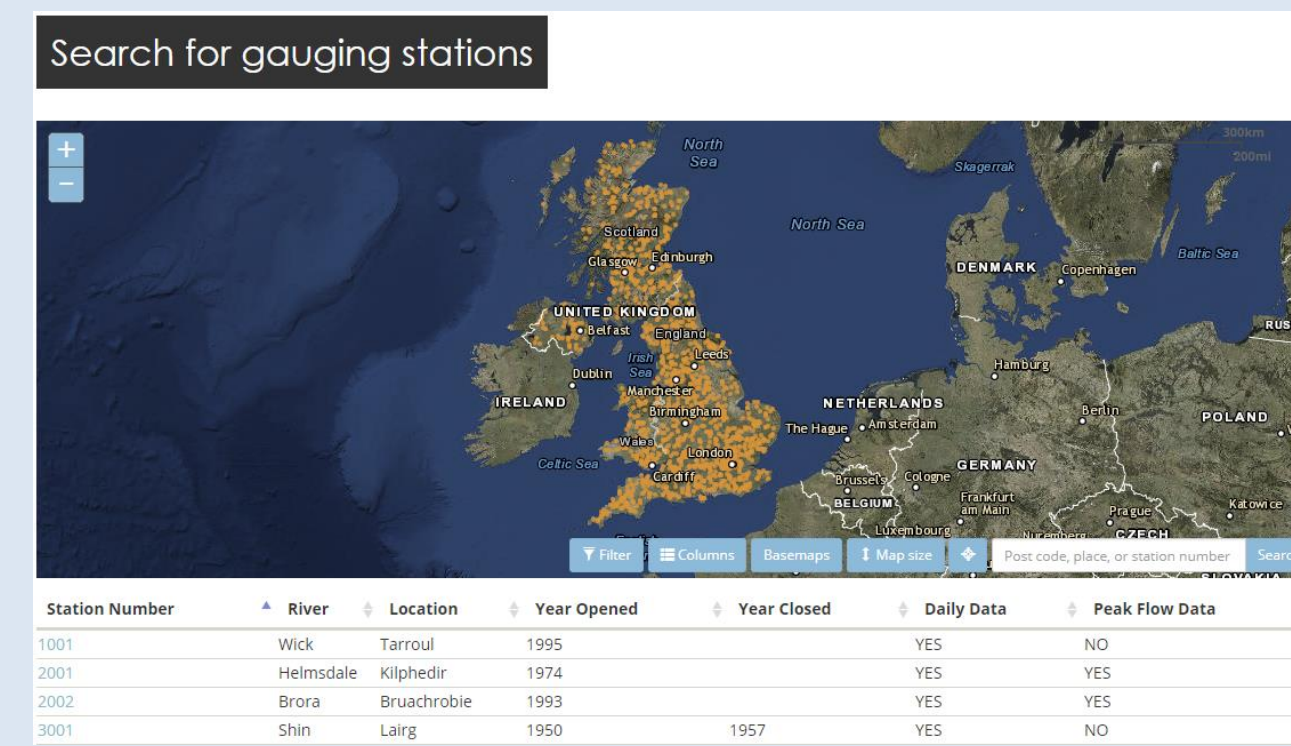
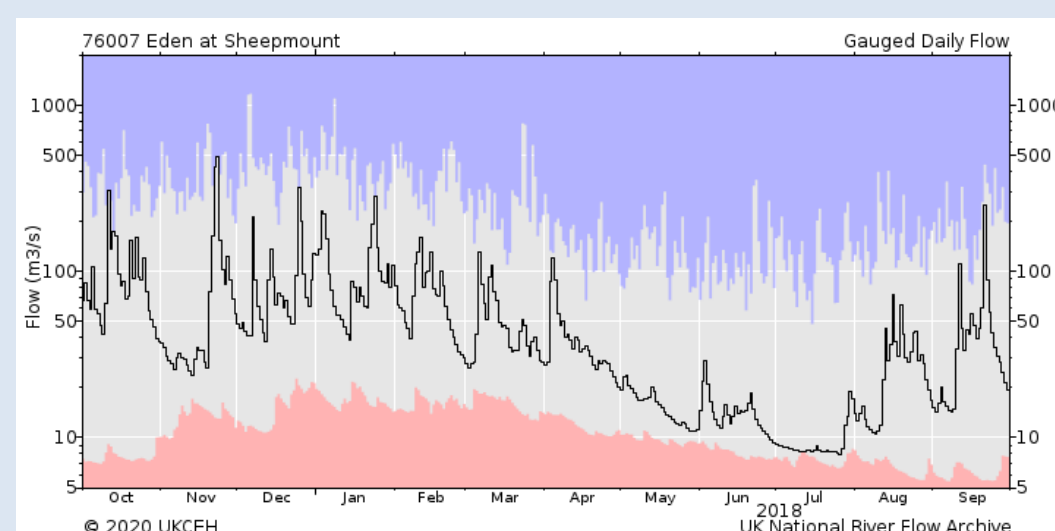
The winter floods of 2015/2016 in the UK - 4 rivers



UK National River Flow Archive

UK National River Flow Archive

- Provides access to daily and peak river flow data for ~1500 locations across the UK
Underpins hydrological research and water management activities
Supports the hydrometric monitoring activities of partner organisations
Data downloads direct from website and API
Follow us on Twitter for updates: @UK_NRFA
Sign up to our newsletter:



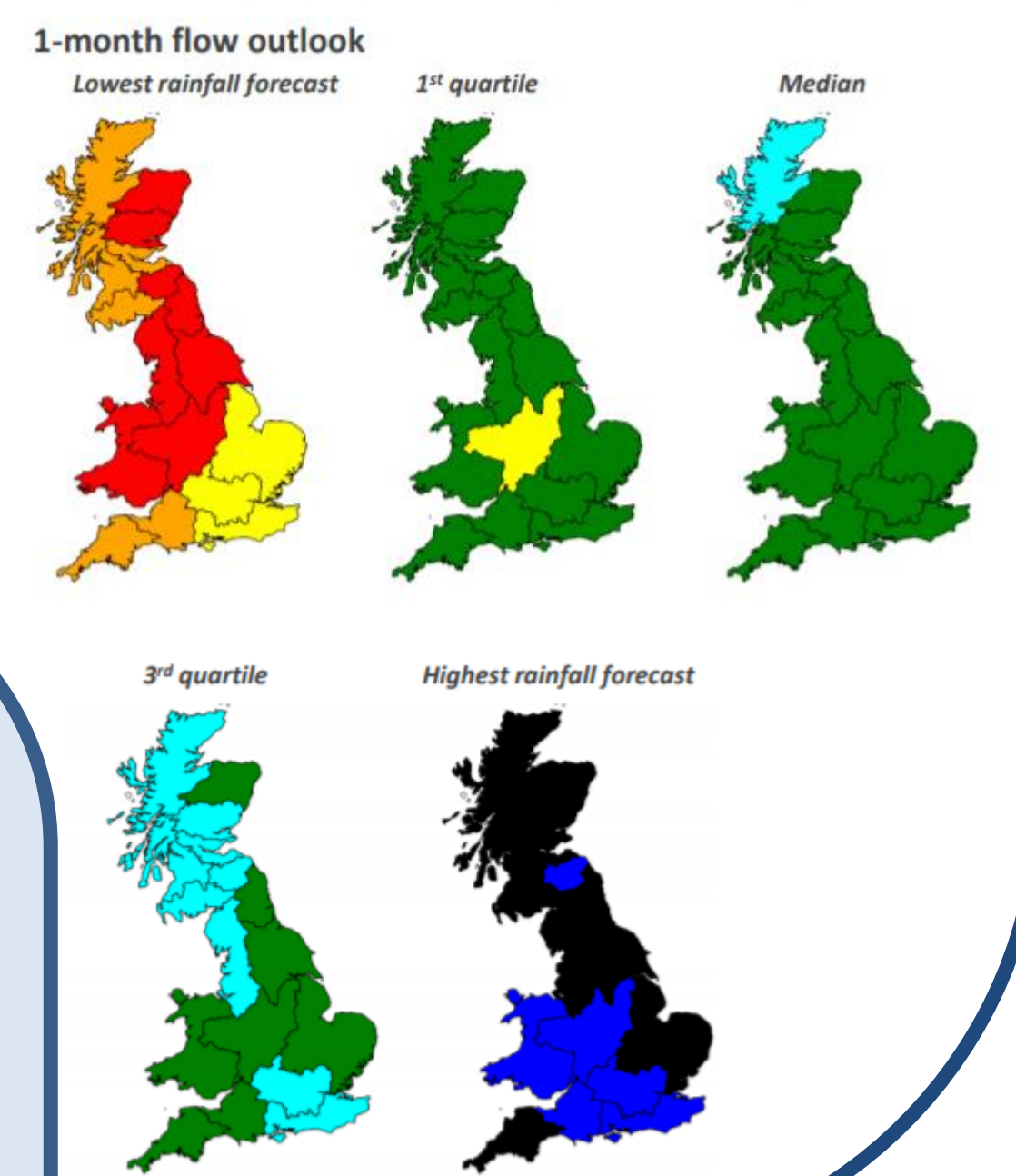
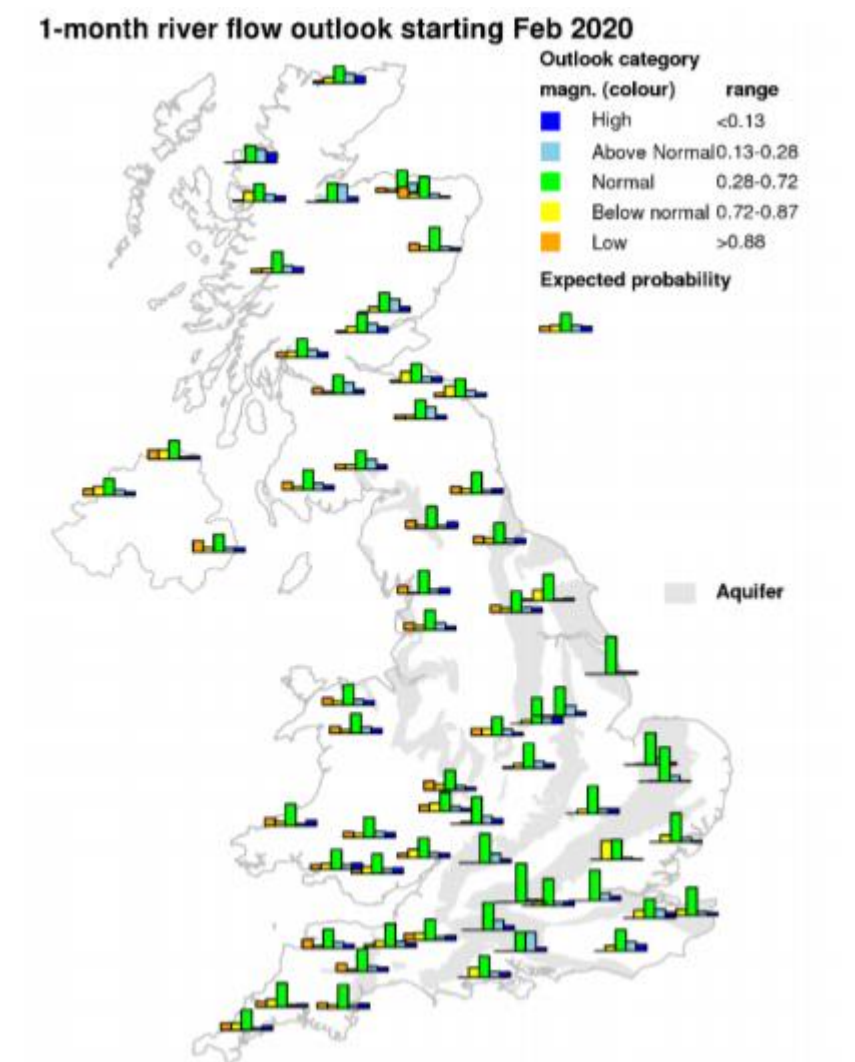
Hydrological Outlook

- Seasonal hydrological forecasts of rainfall, river flow and groundwater
Three modelling approaches produce 1- and 3-month outlook
Supports water resource planning, drought management and inform susceptibility to flooding
Subscribe to receive the Hydrological Outlook:



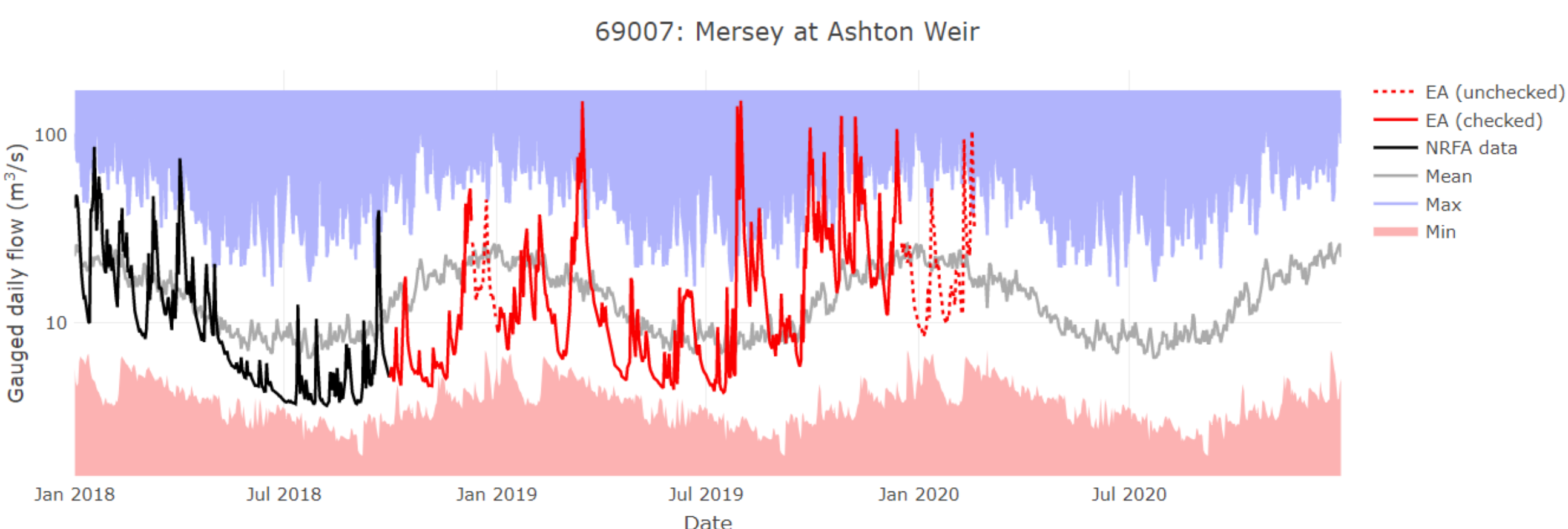
Hydrological Outlook UK

Hydrological Outlook UK text content including rainfall, river flows, and groundwater levels forecasts for February 2020.

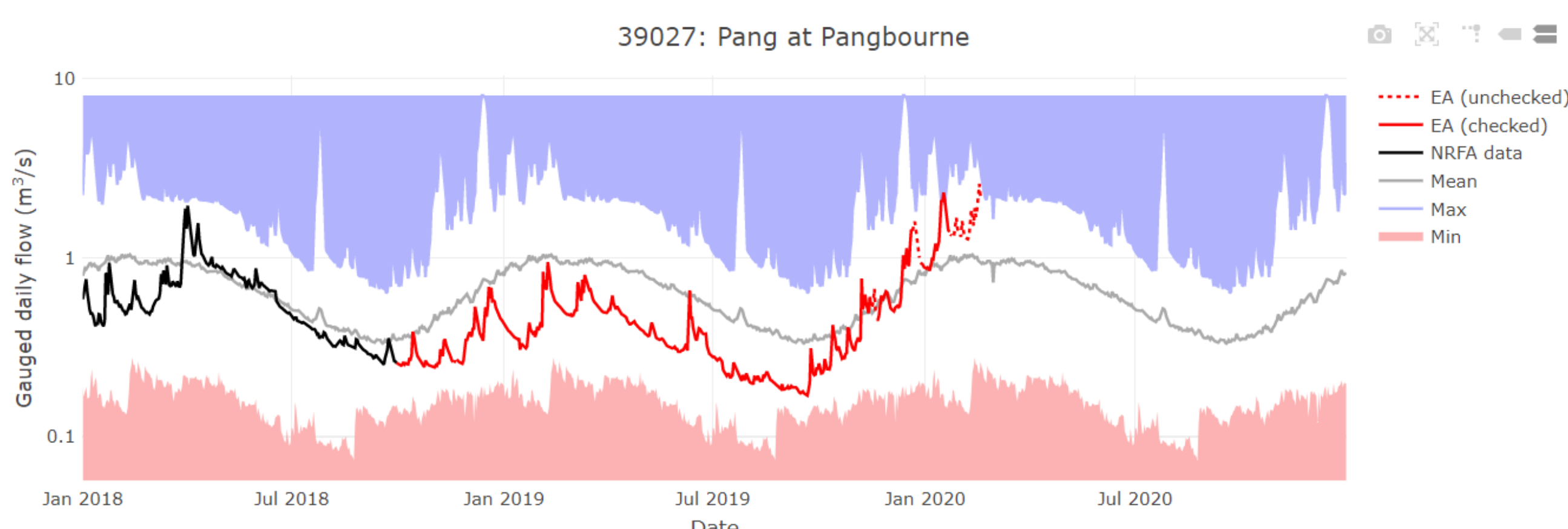


Live Data

- Hosting of near real-time daily river flow data from the Environment Agency's Hydrology API
More recent river flow data are displayed as checked/unchecked (red/dashed red)
Data are appended onto the NRFA validated period of record (black)



Key: Red and blue envelopes represent lowest and highest flows on each day over the period of record.



Key: Red and blue envelopes represent lowest and highest flows on each day over the period of record.

UK Water Resources Portal

https://eip.ceh.ac.uk/hydrology/water-resources/

- Interactive web-based tool for high-resolution hydrological status assessment in (near) real-time
Raw data and standardised climate indices
Multiple variables to assess status: rainfall, river flows (from NRFA and Environment Agency Hydrology API), COSMOS-UK soil moisture data, BGS Groundwater levels
Flexible time-series plotting capabilities including flow regime bandings and past droughts
Full launch in March 2020, explore now:



Screenshot of the UK Water Resources Portal - DEMONSTRATOR interface showing data type, time scale, and map options.

About Drought