

# UK Location Programme Update

Ray Boguslawski  
UK Location Programme Director



# Agenda

- Introduction
- Recent developments and active issues
- Publication status
- Data.gov.uk capabilities
- Technical implementation
- Policy context
- Engagement with data publishers and users
- Benefits realisation
- Looking forward
- Conclusions





Annex I	Annex II	Annex III	
Geographical names Administrative units Addresses Cadastral parcels Transport networks Hydrography Protected sites Coordinate reference systems Geographical grid systems	Elevation Land cover Ortho-imagery Geology	Statistical units Mineral resources Natural risk zones Soils Species distribution Environmental monitoring facilities Population distribution & demography Meteorological features Agriculture and aquaculture facilities Oceanographic features Area management restriction / regulation zones & reporting units	Buildings Sea regions Land use Energy resources Habitats and biotopes Human health and safety Utility and government services Atmospheric conditions Bio-geographical regions Production and industrial facilities
Deadlines Existing Data: <div>Discovery &amp; view     2011</div> <div>Download                2012</div> Compliant Data: <div>New                      2012</div> <div>Transformed          2017</div>	          	          	



## Recent developments

- Architecture and Interoperability Group established with sub-groups for data publication, business interoperability etc.
- Good progress on UK publication of data to meet the November 2011 INSPIRE deadline
- Geographic Search and Preview on Map available in [data.gov.uk](http://data.gov.uk)
- Location Council agreed strategic approach with more emphasis on user engagement, benefit delivery and skills and awareness – details being developed



## Active issues

- Late delivery of download guidance from the Commission means that member states will miss the June 2012 deadline
- Annex III data specifications are unclear, inconsistent and potentially wide ranging – being reviewed with thematic working groups
- Ensuring publication and integration across multiple organisations
- Engagement approach for Annex III
- To what extent do we deliver wider than INSPIRE?
- Location Council role in relation to Open Data and Public Data Group



## UKLP data on data.gov.uk in response to INSPIRE November 2011 requirement

	Actual	Target	Outstanding
<b>INSPIRE</b>			
Datasets	212 (93%)	229	17
Datasets with view services*	171 (75%)	100%	58
Organisations	32 (91%)	35	3
<b>TOTAL</b>			
Datasets	933	-	-
Organisations	34	-	-
% of data.gov.uk records	13%	-	-

*Figures as at 20 February 2012*

\* We are reliant on data publishers measuring the performance of their services and confirming they are compliant with the INSPIRE performance criteria



**Quick route to location data on data.gov.uk**

*<http://bit.ly/mRkRQp>*

# Key point of access . . .

Local data

Statistical data

Health data

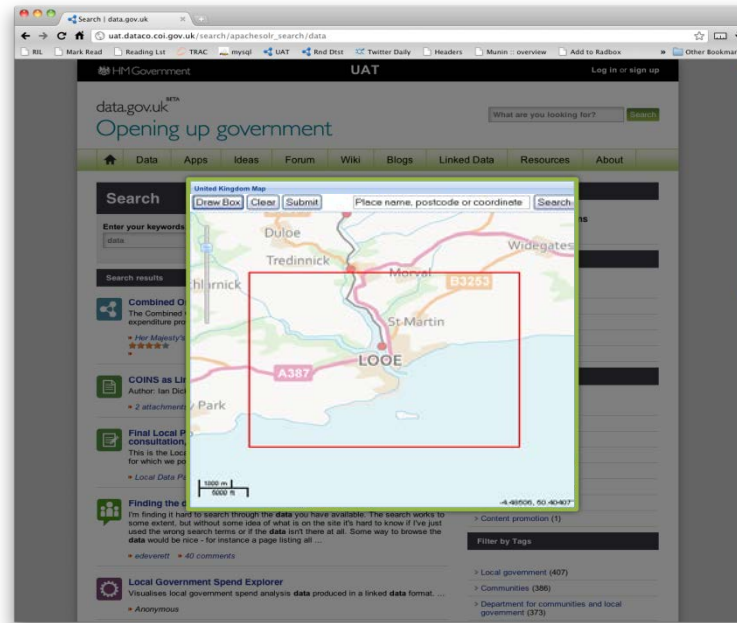
Statute data

Education data

Location data

Transport data

Environment data



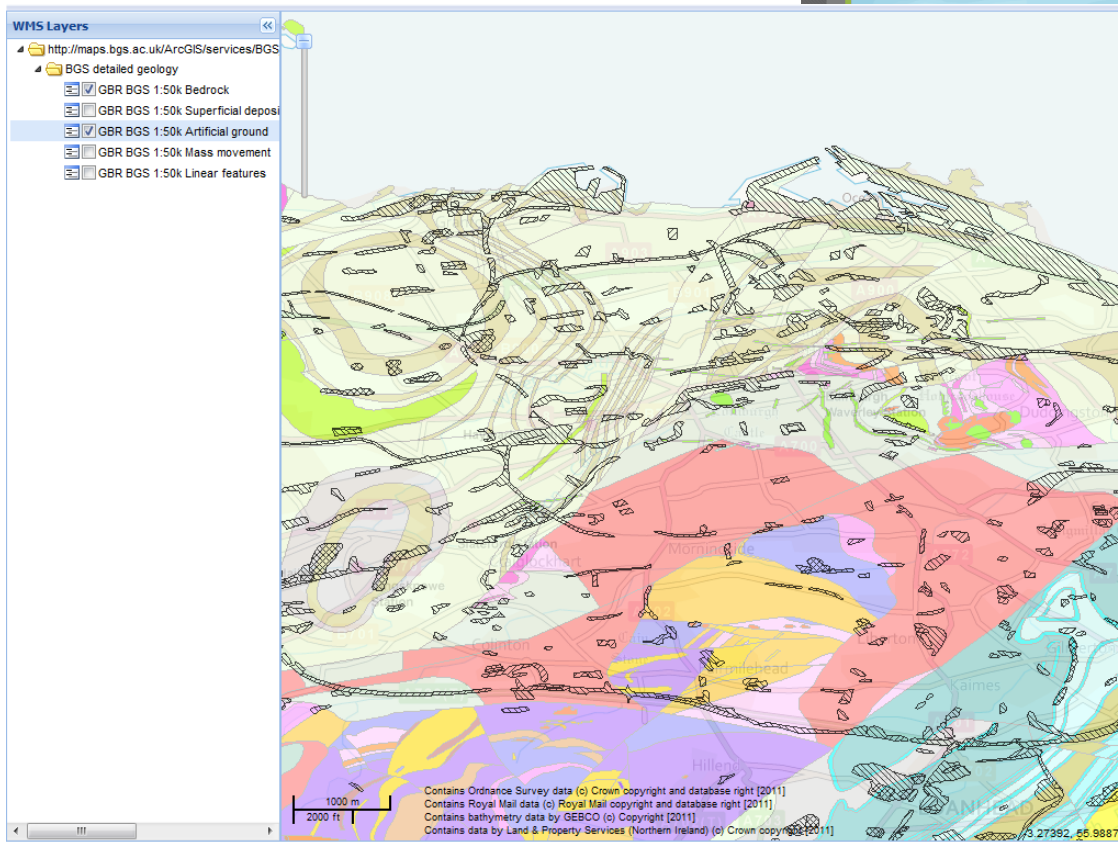
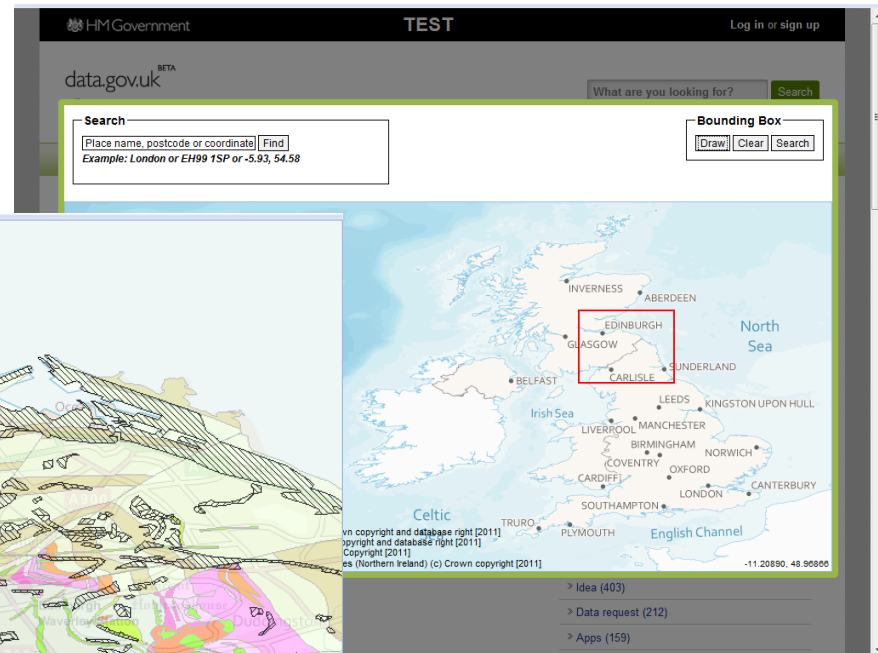
## data.gov.uk

Discover, evaluate, access, link to, reuse online



# UKLP enhancements to data.gov.uk

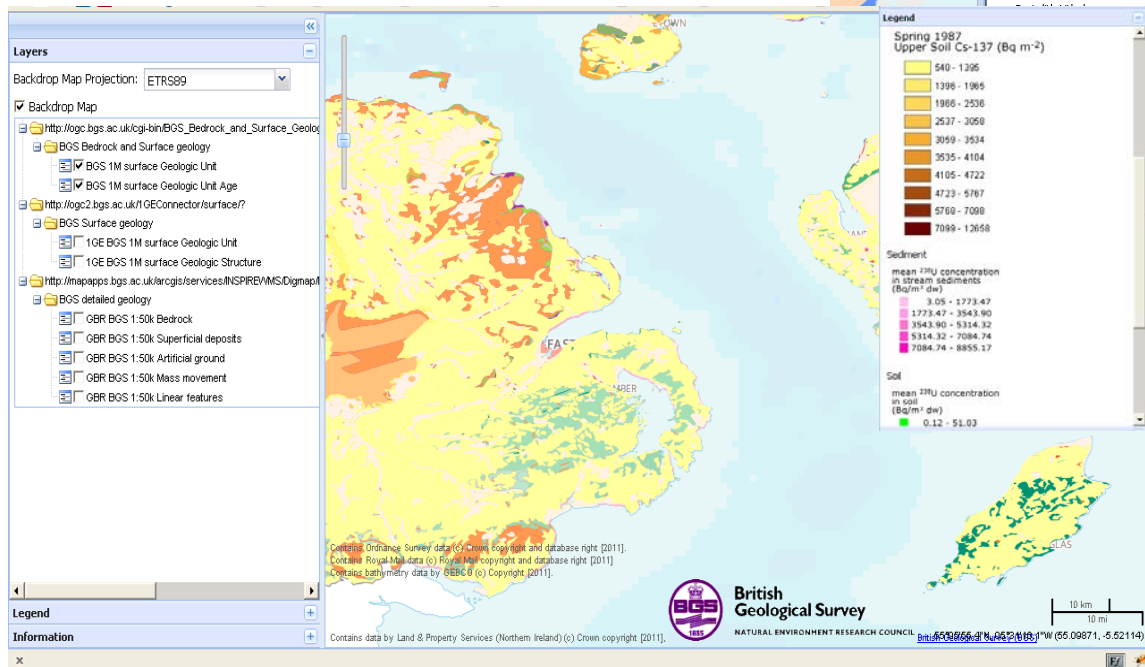
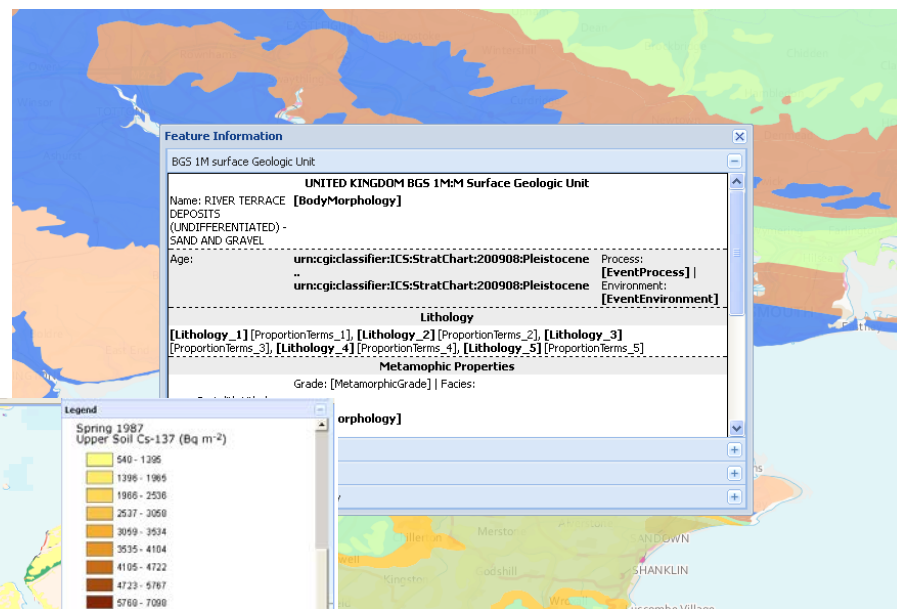
**Search:** Boundary box search



**Preview:**  
Evaluate up to  
10 data layers

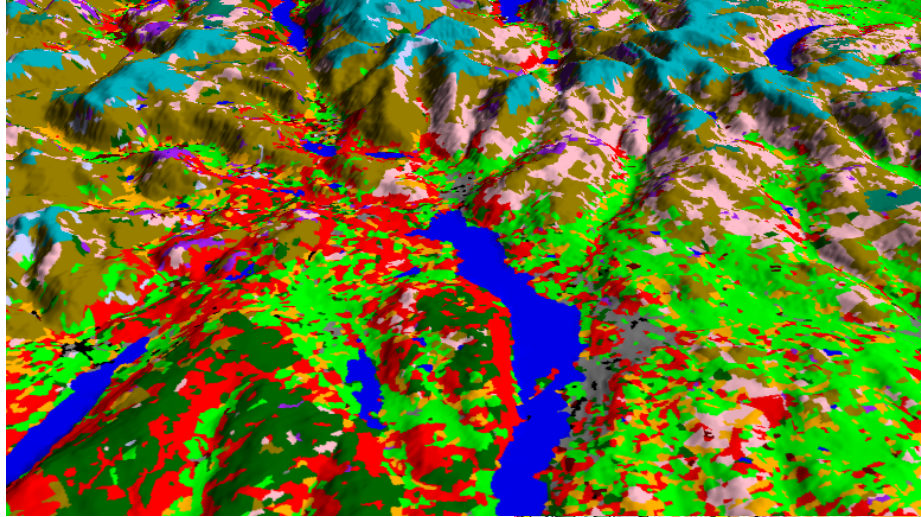
# What's next for "Preview"?

**Features:** Using web feature services

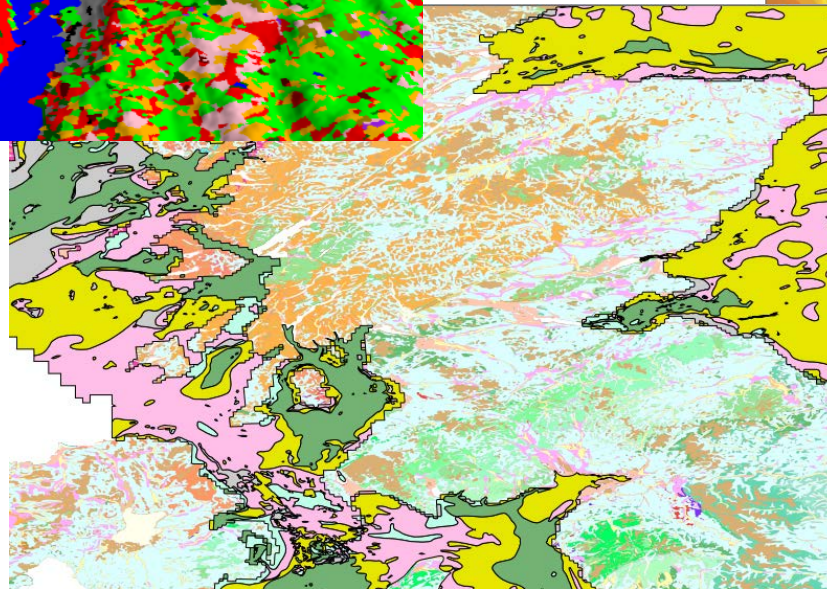


**Legends:** Display contextual legends

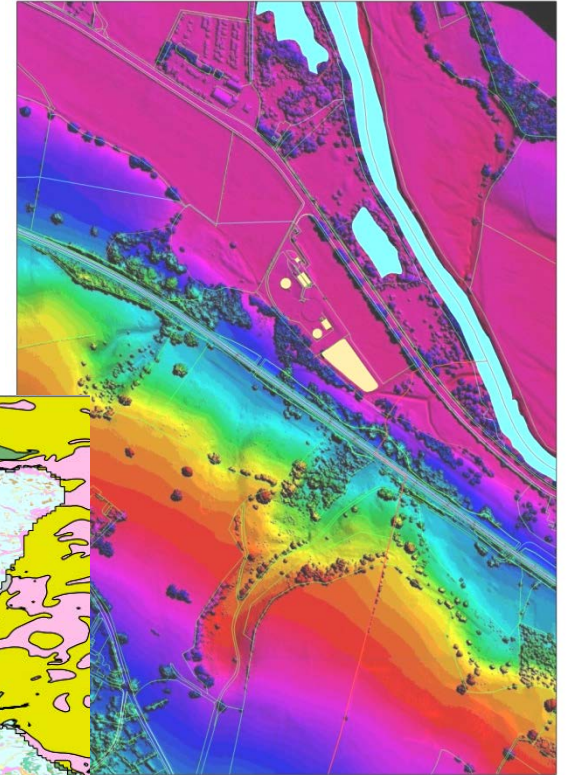
# Applications can be built with this data . . .



Land cover and  
terrain model



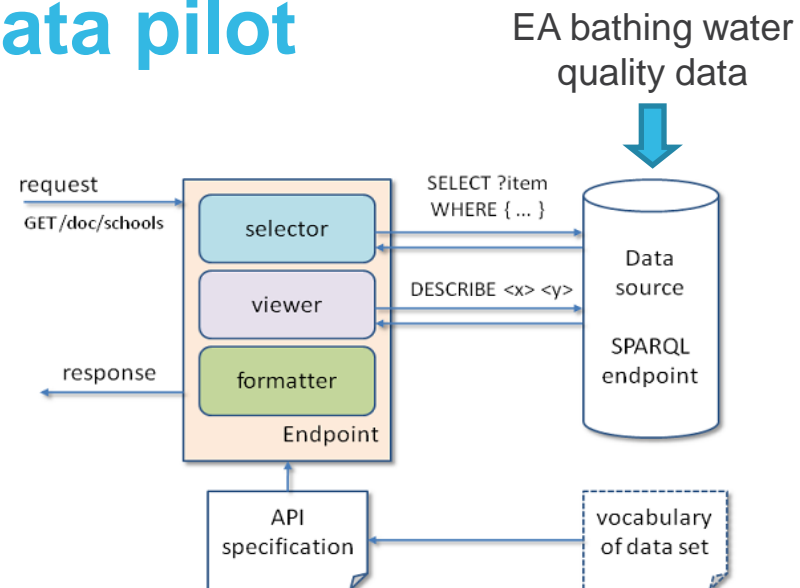
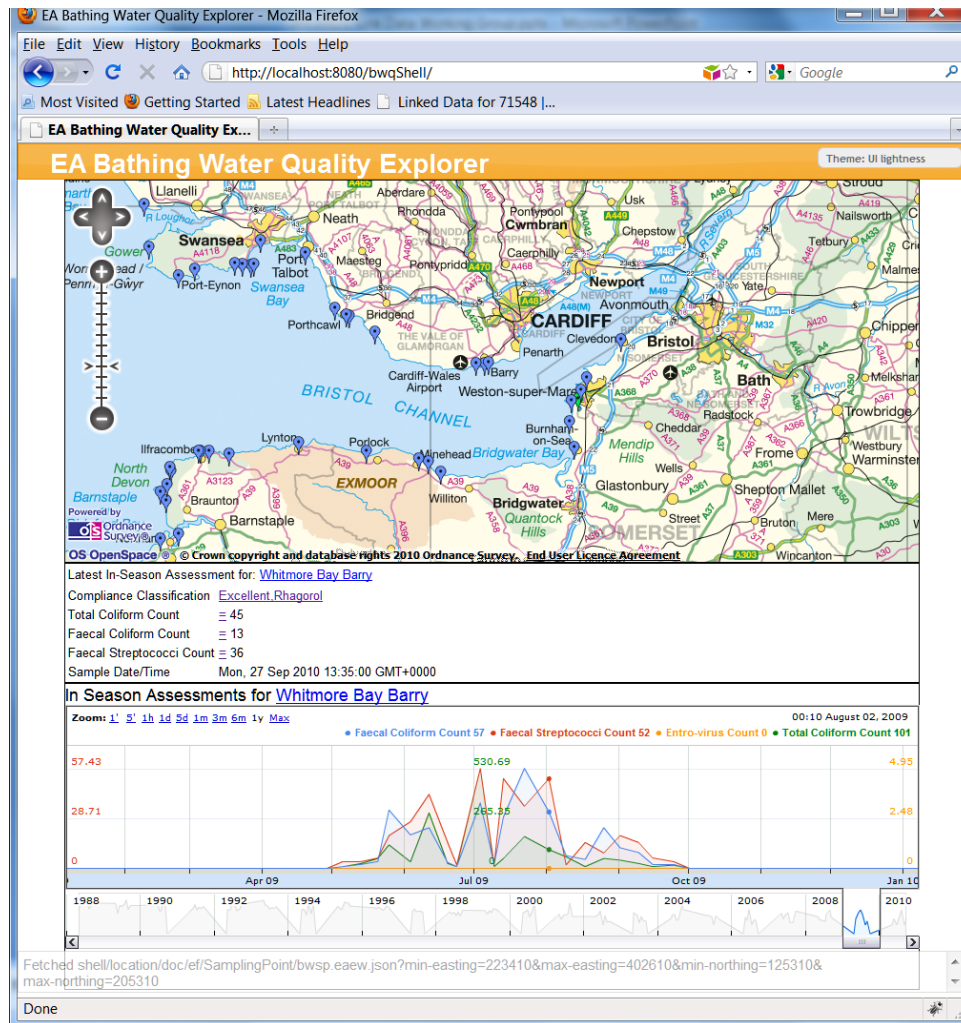
Bedrock and superficial geology



LIDAR digital  
surface model

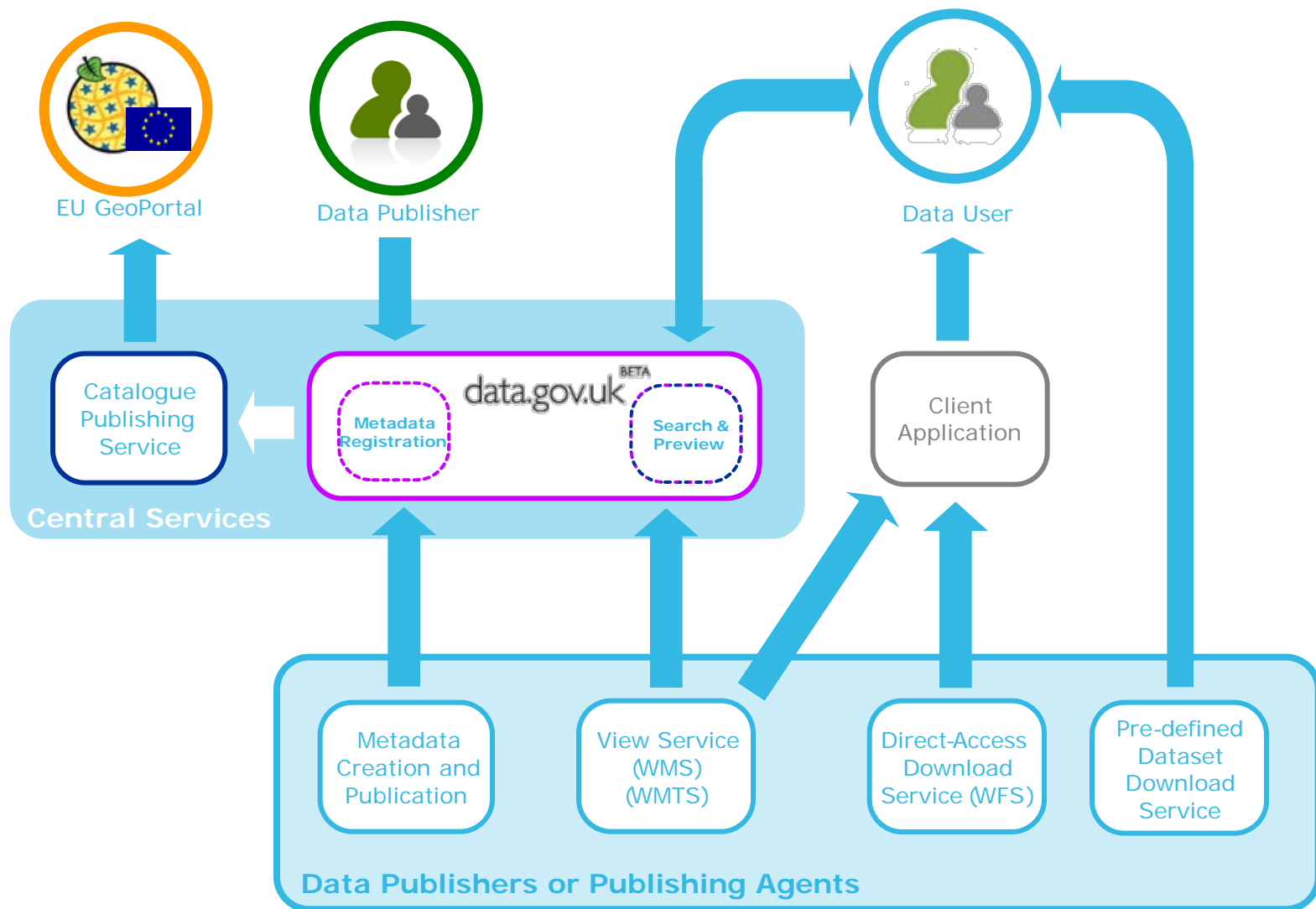


# Using INSPIRE data: Environment Agency bathing water linked data pilot

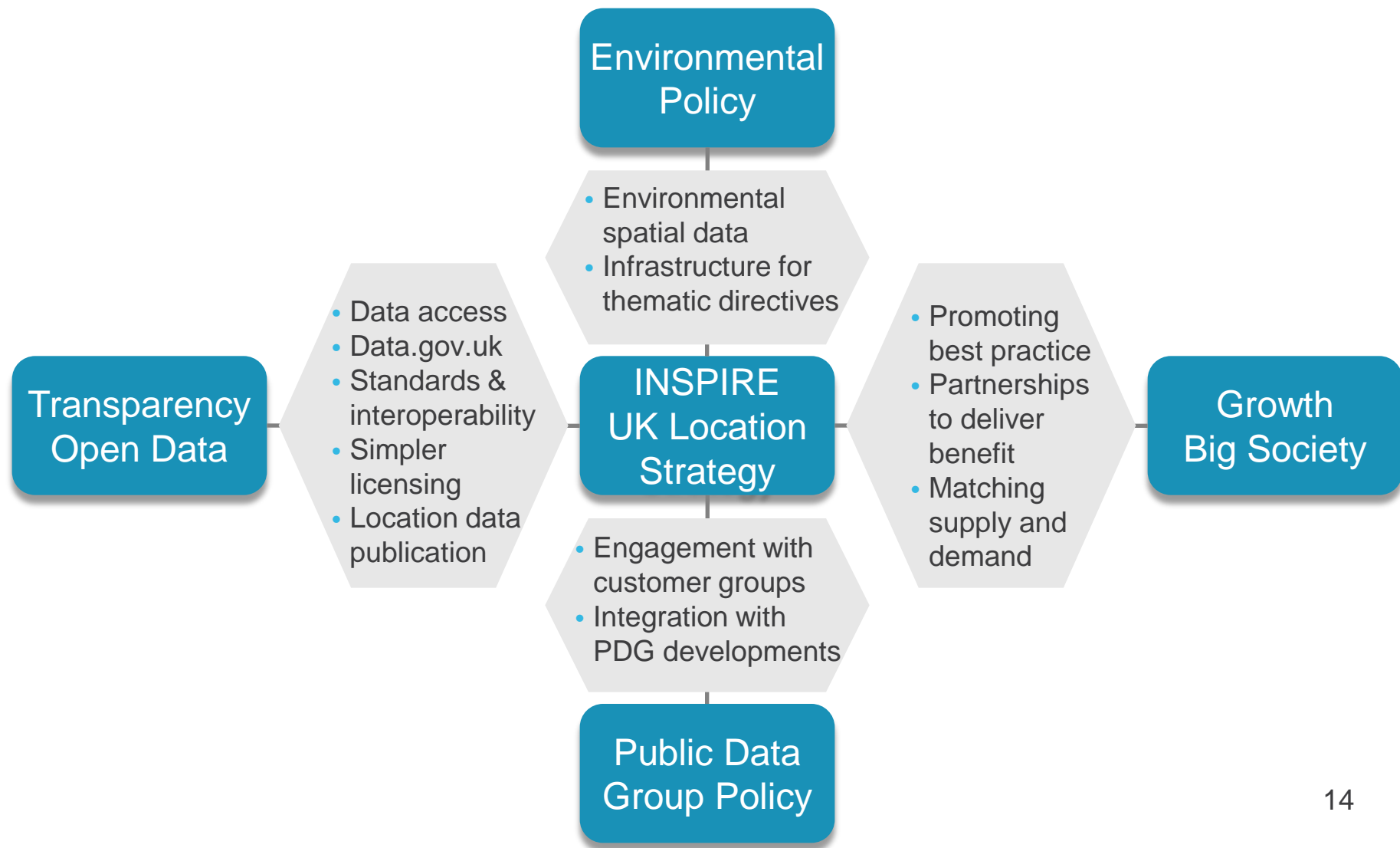


- Uses data from EA and OS
- Potential for linking to other data to see the relationships between bathing water quality and visitor numbers and meteorological events such as storms

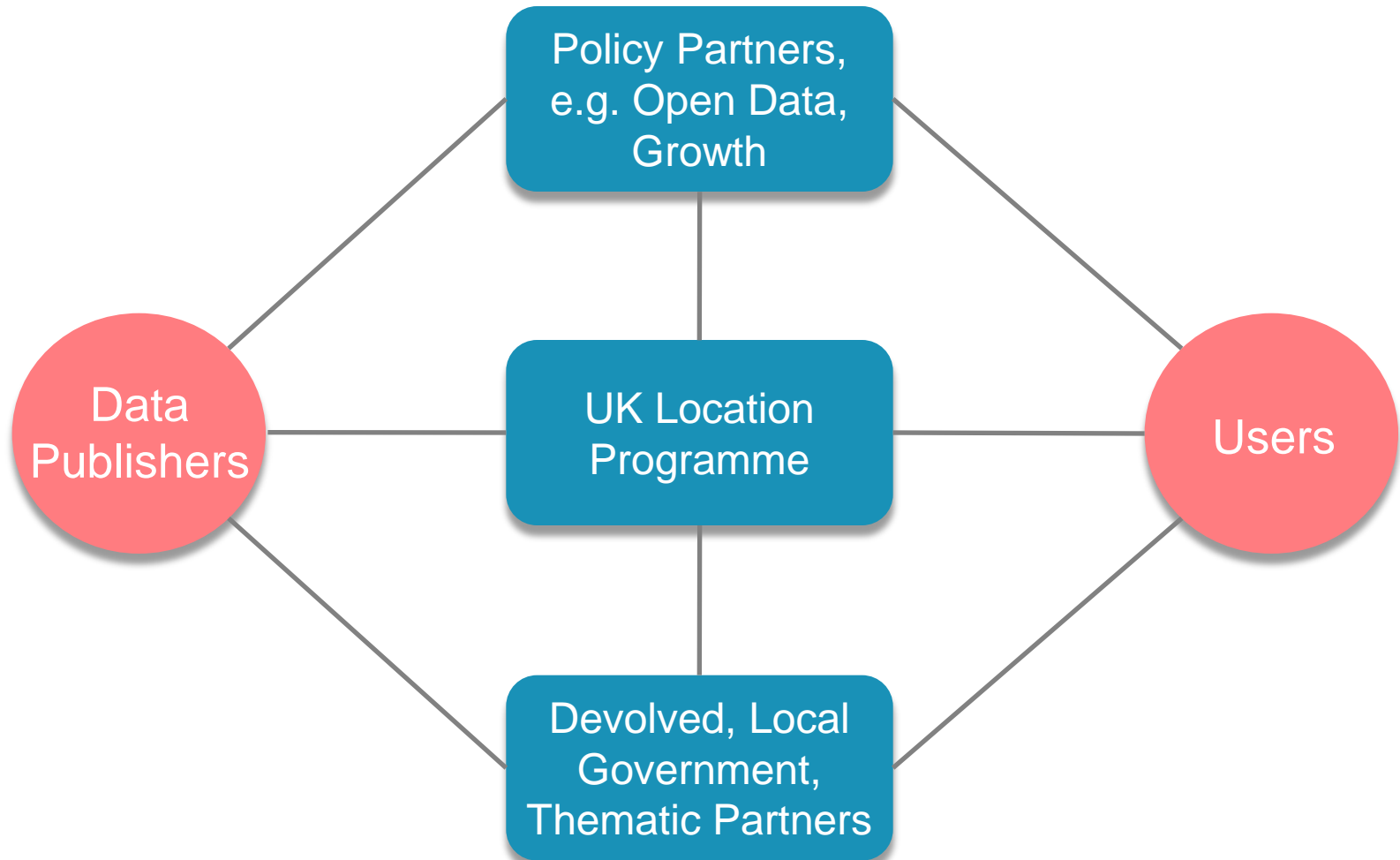
# UK Location core IT infrastructure



# UKLP key policy relationships



# Engagement with data publishers and users





# Engagement with data publishers and users

## Phase 1 (2010 – 2011)

- Annex I and II existing datasets
- Discovery and view services
- 35 organisations
- Experienced in data publication
- 230 datasets
- Some non INSPIRE data
- Engagement more with data publishers than users
- Supply focus
- Wider context of transparency agenda and publication of data about the operation of government
- Introduction of open government licence

## Phase 2 (2012 – 2013)

- Dataset maintenance
- Newly discovered Annex 1 and II existing datasets
- New Annex I datasets compliant with data specifications
- Download and transformation
- Annex III existing datasets
- 500+ organisations
- Many inexperienced in data publication
- 5000+ datasets
- More non INSPIRE data
- Balanced engagement with data providers and users
- Matching demand and supply
- Focus on benefits
- Policy shift to open data, growth, high value datasets





# Engagement with data publishers and users

## Phase 1 (2010 – 2011)

### Data Publishers

- Theme Groups co-ordinate publication
- Data Publishing Working Group advises on and assures publication approach
- UKLP publication software and guidance, integration with data.gov.uk
- Simplified licensing based on OGL
- Workshops for publishers and suppliers
- UKLP monitoring, assurance and co-ordinated testing
- Satellite co-ordination in devolved administration and thematic areas
- Website and help desk

### Users

- User Group provides Council with steer on issues and input to Programme on benefits strategy
- Sub groups for third sector, retail demographics and environmental research
- Sub group testing IT services
- GI case studies published from user community
- UKLP pilots and early adopter projects

## Phase 2 (2012 – 2013)

- Theme Groups replaced by on-line communities
- Webinars to share information
- Documentation using wikis
- Data Publishing Working Group manages activities to resolve specific issues
- Increased focus on Open Data and Linked Data
- Feedback from data.gov.uk and on-line communities on dataset issues and new demands
- Demand based publication schedule
- Location Council part of Open Data governance, helping release key datasets
- User Group drives benefit delivery placing demands on Programme Board
- More user sub groups, e.g. insurance, infrastructure
- Sub group leads work through on-line communities
- Best practice case studies use UKLP data and services



# What benefits can we expect?

## Delivering more for less

- Reducing costs of delivery while providing more value
- Cutting duplication and promoting reuse

## Better services

- More effective and responsive public services
- Better cross organisational coordination

## Enabling innovative new services and economic growth

- Providing services which have been impractical or not cost effective
- Unanticipated reuse - new knowledge from different combinations of data
- Increased commercial innovation and exploitation of location data
- Improved capacity and capability for use of location data

## Better informed policy development and decision making

- Providing an improved evidence base
- Better preparation for and response to emergencies

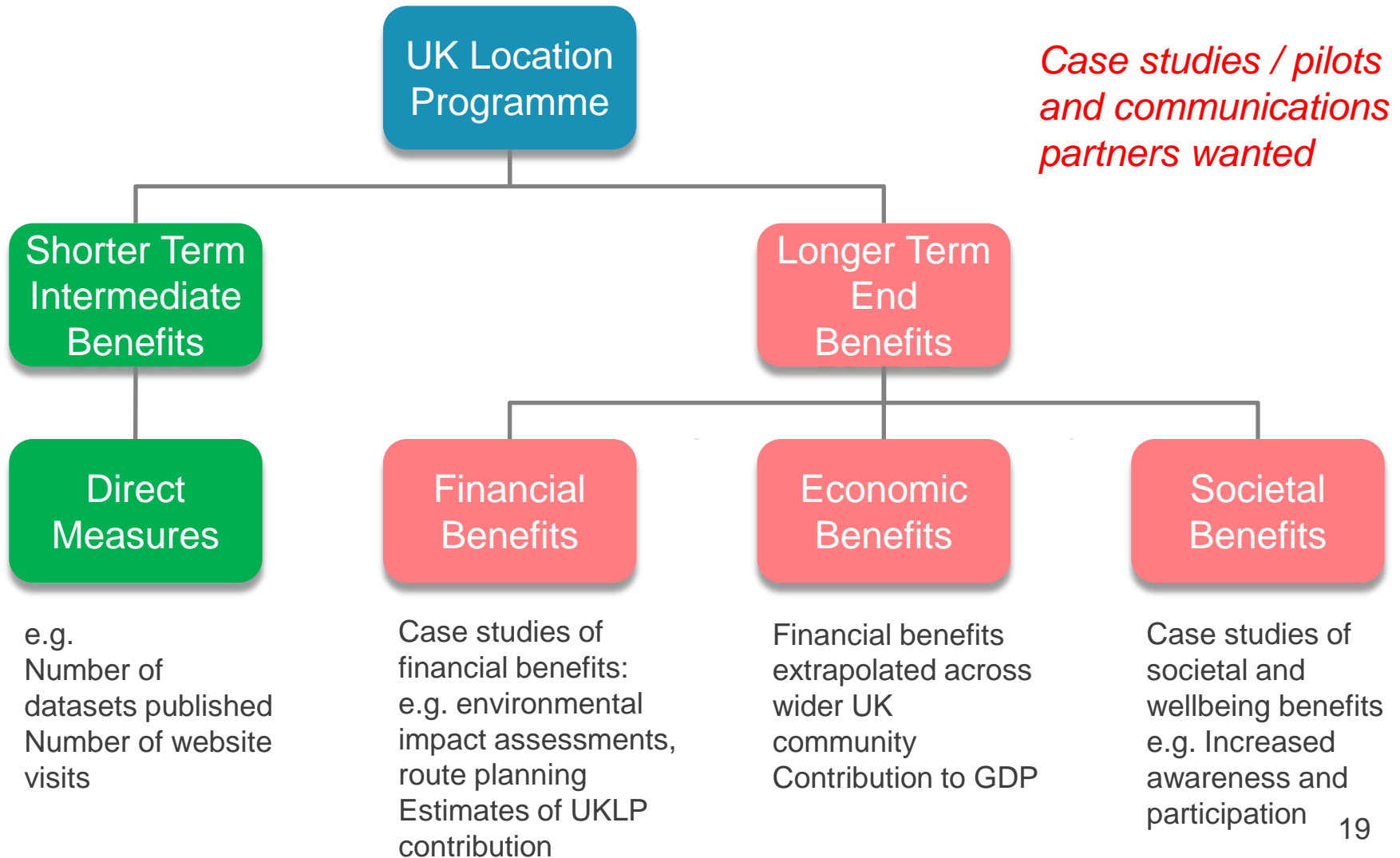
## Wider societal benefit

- Helping deliver environmental and other policy outcomes, including improving wellbeing, through better access to information

## More open government

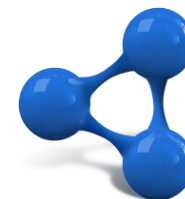
- Making government information more accessible to the public

# Benefits realisation strategy



## Key aims for the year ahead . . .

- Deliver UK Location Strategy and INSPIRE in wider policy context – Open Data, Data Strategy Board, Public Data Group, PSMA, environmental policy
- Complete November 2011 publication requirement for all data providers
- Introduce download and transformation services by December 2012 and as soon as possible after June 2012
- Start to deliver Annex I/II key datasets and any new datasets in line with the INSPIRE data specifications, e.g. addressing
- Set up engagement model to support expansion in data publishers and datasets, meet user demand and deliver benefits
- Improve IT services as data.gov.uk develops and integrate with Government Digital Service
- Track benefits delivered as a result of the Programme







## Conclusions

- INSPIRE isn't being implemented in isolation – the landscape is complex
- There is strong convergence with wider UK data policy and other policy drivers – and an important role for location data
- The UK is making good progress on INSPIRE but there is much to do through the whole INSPIRE schedule
- The UK Location Strategy is still valid and we need to ensure benefits are delivered as widely as possible
- Planning and integrated delivery across all parties is a challenge and requires strong engagement and co-ordination
- A lot of expertise required - INSPIRE is a world first and there's no manual!

# UKLP website - <http://location.defra.gov.uk/>

 | Other defra.gov.uk sites

Contact Defra | News | Defra site A-Z



[Home page](#) [News](#) [Programme](#) [Council](#) [Resources](#) [INSPIRE](#)

You are here: UK Location Home

▼ Defra home

▼ UK Location

► News


► Programme

► Council

► Resources

► INSPIRE

## UK Location



Welcome to UK Location. UK Location is a UK pan-government initiative to improve the sharing and re-use of public sector location information. Established following the publication of the [UK Location Strategy](#), it incorporates the implementation of the strategy and the [EC INSPIRE](#). Coordination is through the [Location Council](#), with the [Department of Environment, Food and Rural Affairs](#) as the lead government department.

The UK Location Strategy will be delivered through a multi-year programme of work – the [UK Location Programme](#). This is intended to deliver a significant change in the management of location information – one that introduces a new, innovative, and joined up service for government, business and citizens – not only from within the UK but also across the European Union.

This site is primarily for information purposes. You will find [News](#) items, both on what is happening within the programme and on related changes within the public sector and industry.

### Latest updates

- UK Location Roadshow – hear from our guest speakers  
7 June 2010
- UK Location Roadshow in Manchester this Thursday : registration closing soon  
7 June 2010
- Latest newsletter now available and UK Location roadshow update  
1 June 2010
- An update on the technical delivery of INSPIRE  
26 May 2010
- A Guide to Linked Data and the UK Location Strategy  
17 May 2010

### Latest resources

- [monitoring report](#)  
4 June 2010
- [Spring 2010 Newsletter](#)  
1 June 2010
- [Member State Report](#)  
26 May 2010
- [response to EC's State of Play Questionnaire](#)  
26 May 2010
- [Linked Data and the UK Location Strategy](#)  
17 May 2010

### Archives

Select Month



**UK Location Council**  
Annual Report  
2010/11



Giants Causeway, Northern  
Ireland



Tyndrum, Scotland

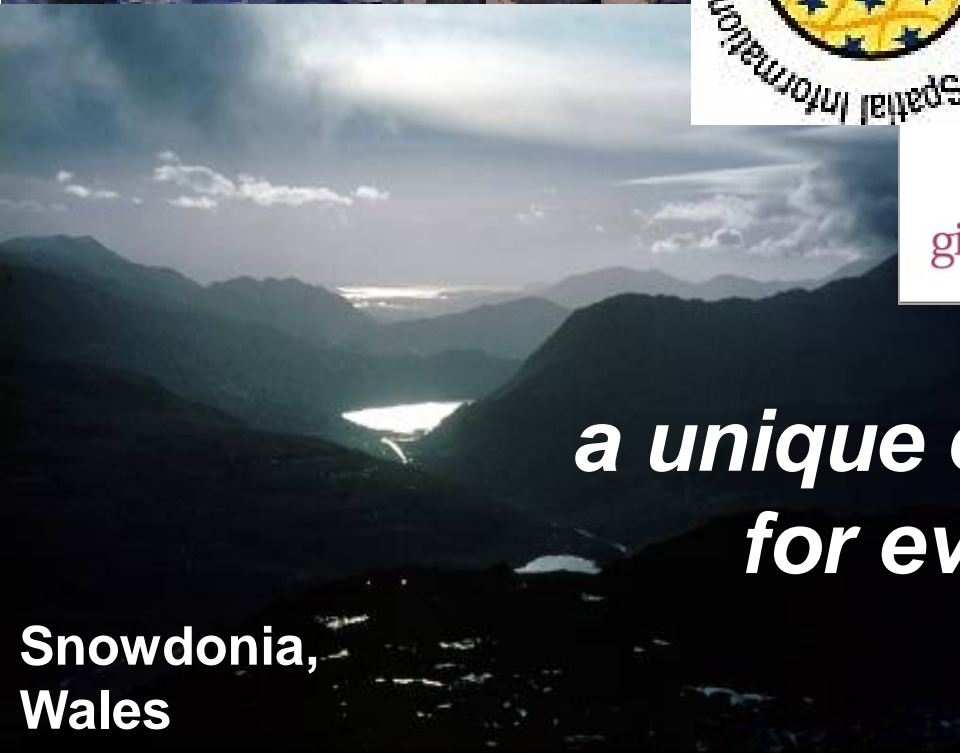


uklocationprogramme@defra.gsi.gov.uk  
ray.boguslawski@defra.gsi.gov.uk  
<http://location.defra.gov.uk/>



*a unique opportunity  
for everyone*

Snowdonia,  
Wales



London,  
England